



COVID-19 RESPONSE

INYO

COVID-19 Update

Tuesday, December 21, 2021

Health Officer Order

Universal Masking

Scan the QR Code with a
smart phone, or visit:
www.inyocounty.us/covid-19/orders-guidance



Current Orders and Guidance (CDPH):

- **Effective 12/15/2021** – Universal Indoor Masking throughout California, regardless of vaccination status and facility location, until at least January 15, 2022

Local Health Officer Order:

- ***Remains in place***– Universal Indoor Masking in public settings throughout Inyo County, regardless of vaccination status and facility location

Universal Masking

Get the Most out of Masking

Regardless of the mask type,
it is only effective if it is worn over your mouth and nose.

An effective mask has both **good fit** and **good filtration**. Good fit and filtration improve protection for others if you are infected and protection for you if you are exposed to an infected person.



Poor Fitting Mask: A poor fitting mask is not effective. If there are gaps between the face and mask, such as above the nose or at the sides, air that has virus particles can easily leak in or out around the sides of the mask.



Good Fitting Mask: An effective and well fitted mask has no gaps between the face and mask. **Good fit** forces the air that you breathe out and breathe in to go through the mask and be filtered. **Good filtration** blocks the virus particles from going through the mask itself

GOOD	BETTER	BEST
<ul style="list-style-type: none">Fabric mask with three (3) or more cloth layers	<ul style="list-style-type: none">Double mask (surgical mask + cloth mask)Fitted medical mask (surgical mask)	<ul style="list-style-type: none">N95 (also best for wildfire smoke)KN95KF94

Case Numbers

Scan the QR Code with a smart phone, or visit:
www.inyocounty.us/covid-19/covid-19-case-rate



COVID-19 Case Numbers | Monday, December 20, 2021

Inyo County		
Positive COVID-19 Cases:	Active COVID-19 Cases:	Confirmed COVID-19 Deaths:
2,630	35	47
+4 case increase over 12/17/21 update		+0 death increase over 12/17/21 update

Case Report update shared on: Mondays, Wednesdays and Fridays*

Monday report includes: Friday, Saturday, and Sunday positive cases	Wednesday report includes: Monday and Tuesday positive cases	Friday* report includes: Wednesday and Thursday positive cases
------------------------------------------------------------------------	-----------------------------------------------------------------	-------------------------------------------------------------------

Inyo County COVID-19 Case Demographics	
Ages	Active Cases
Ages 0-17	5
Ages 18-49	17
Ages 50-64	8
Ages 65+	5
Unreported or Missing Data	0
Gender	Active Cases
Male	10
Female	25
Gender ID or Missing Data	0
Location	Active Cases
North County (Communities North of and including Big Pine)	29
South County (Communities South of and including Independence)	4
East County (Communities East of Lone Pine)	2
Unreported or Missing Data	0

*Due to the December Winter Holidays –

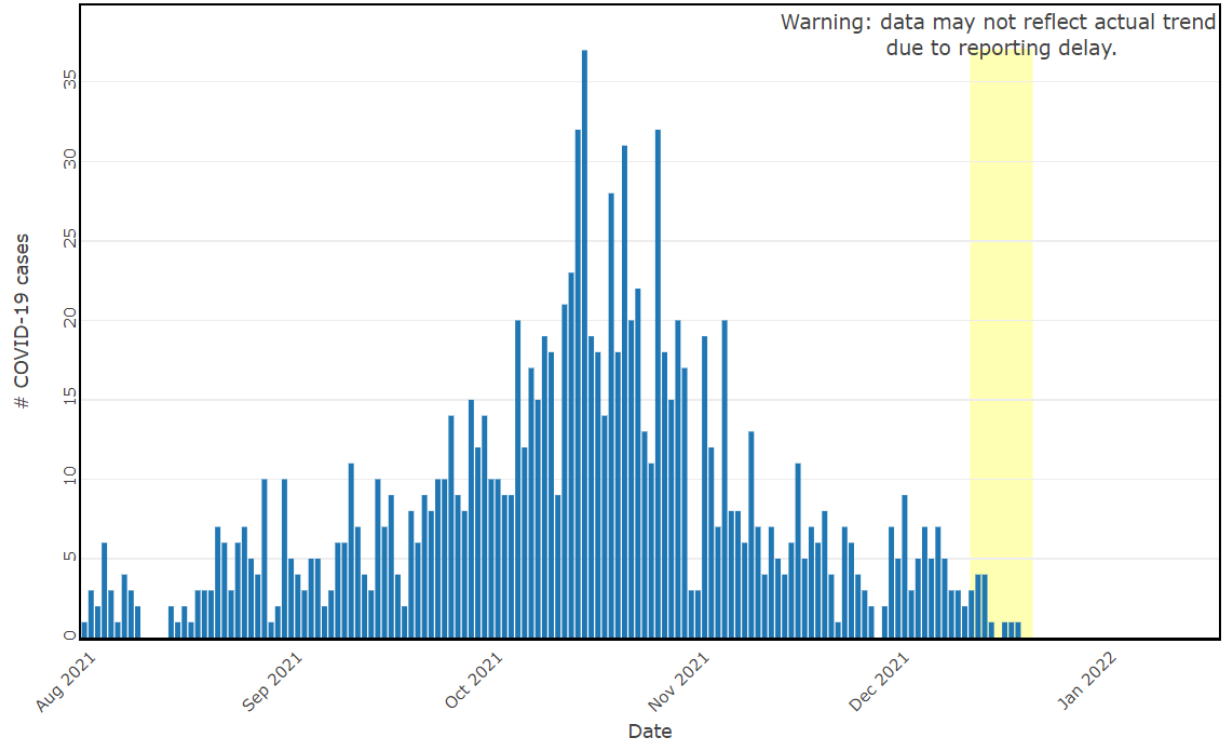
There will be no updates posted on:

Friday, December 24, 2021 or Friday, December 31, 2021

Figures usually reported on Fridays will be included in the Monday update following the holidays.

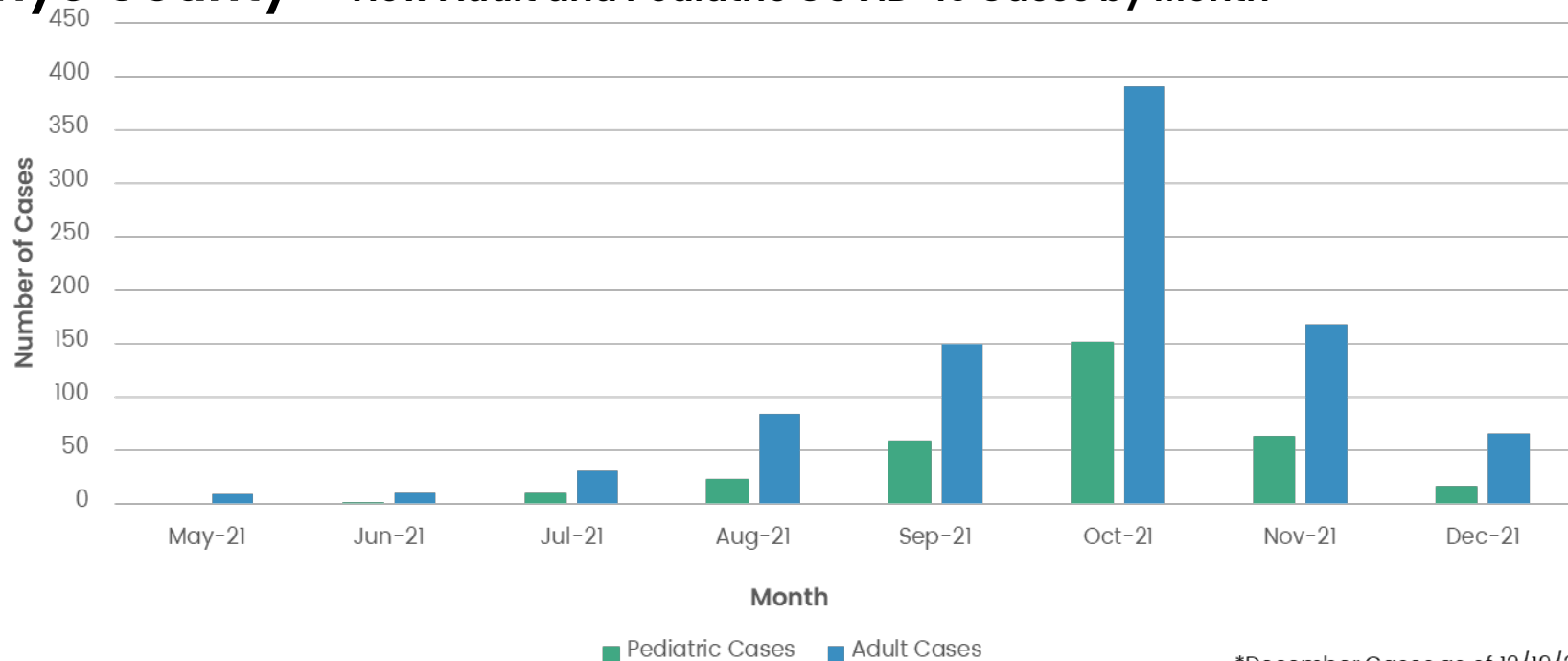
Case Trends - Inyo County

New Cases(Day-over-day):
Inyo



Case Trends

Inyo County – New Adult and Pediatric COVID-19 Cases by Month



*December Cases as of 12/19/21

Case Trends

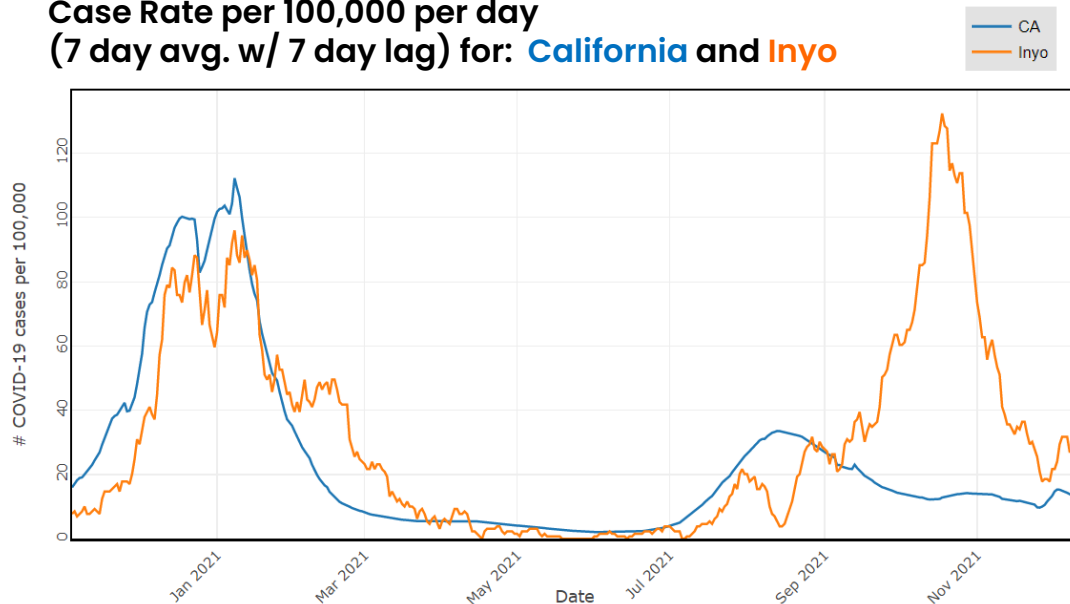
Inyo County vs. California

Scan the QR Code with a
smart phone, or visit:

www.inyocounty.us/covid-19/data-resources



Case Rate per 100,000 per day
(7 day avg. w/ 7 day lag) for: **California** and **Inyo**

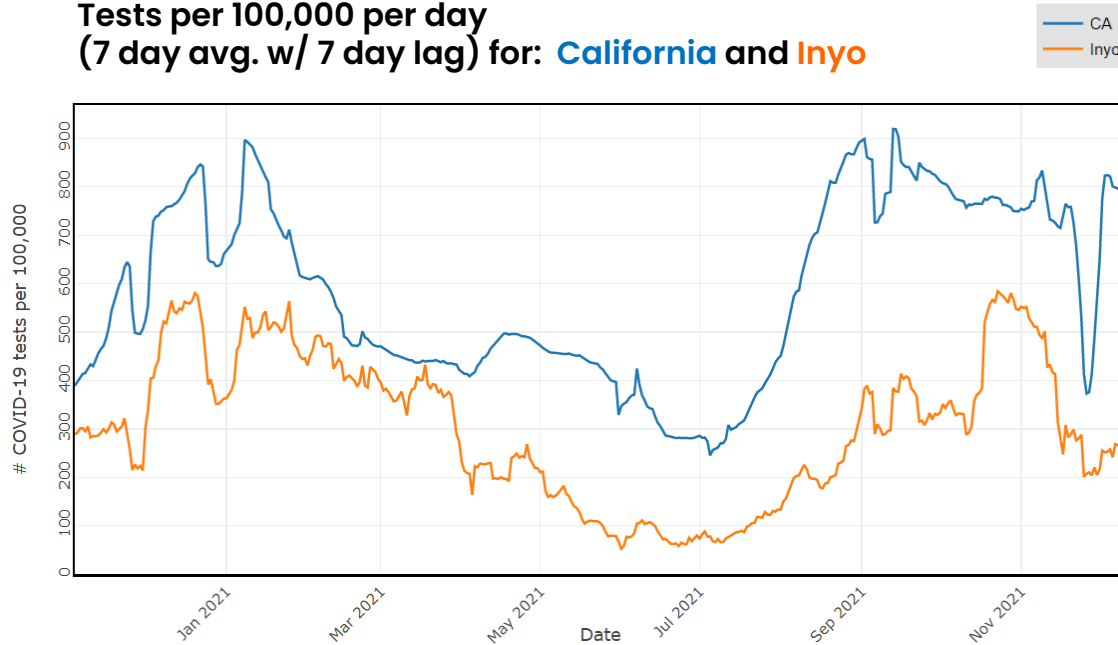


- The case rate in Inyo County is currently 21.68 per 100,000 (a decrease from the 27.09 per 100,000 people reported last week).
- The test positivity rate is 6.006%

Testing Trends

Inyo County vs. California

Tests per 100,000 per day
(7 day avg. w/ 7 day lag) for: **California** and **Inyo**



Hours of Operation:

- Bishop: **8:00 am to 4:00 pm**
(lunch from Noon to 1:00 pm)
Monday, Wednesday, & Thursday
- Lone Pine: **9:00 am to 6:00 pm**
(lunch from 11:00 am to 1:00 pm)
Tuesday & Friday

Testing sites are **CLOSED** on holidays

- Lone Pine:
 - Closed - Friday 12/24/21
 - Closed - Friday 12/31/21

At-Home COVID-19 Antigen Testing

- Available at Public Health Clinic in Bishop by 12/23/21
- Coming soon to other HHS offices in Lone Pine, Independence, and Tecopa!
- Plan to distribute through other community partners as well



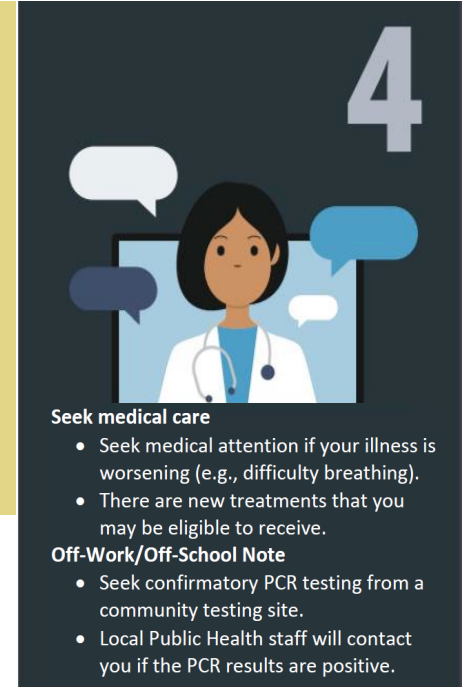
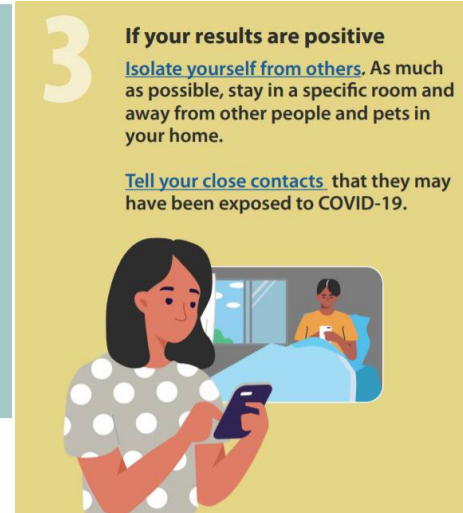
iHealth At-Home COVID-19 Antigen Test



Read instructions or watch the video on how to test:
https://www.youtube.com/watch?v=qBt_H4Gc-rU.

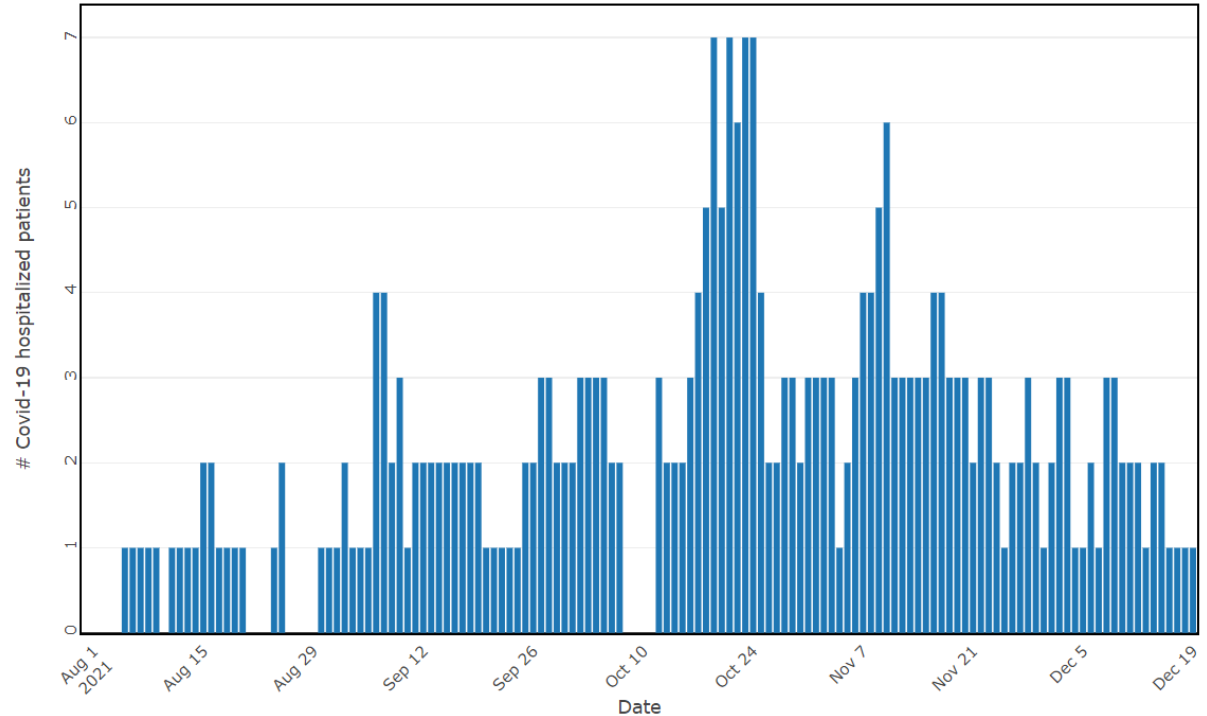


Visit
https://my.primary.health/l/c_dphcbootc or
call your results in at
(650)275-5419



Hospitalizations - Inyo County

**# Hospitalized Patients
that are COVID-19 positive (+):**
Inyo



COVID-19 Vaccine

Inyo County Vaccine Coverage

Scan the QR Code with a
smart phone, or visit:

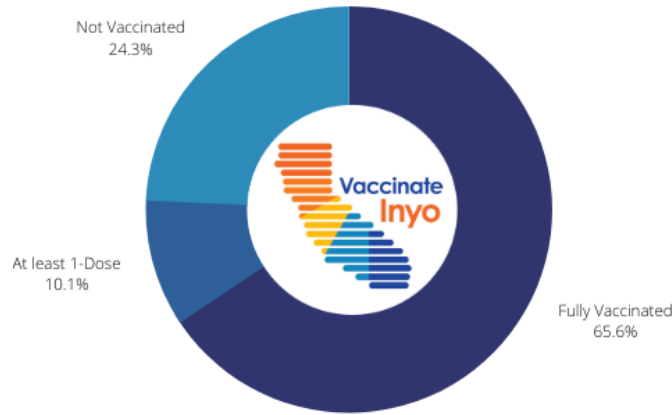
www.inyocounty.us/vaccines



Vaccinated Status: Inyo County

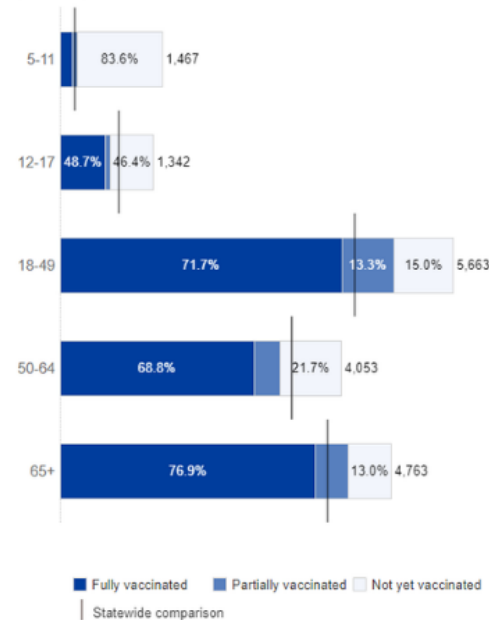
As of: 12/20/2021

Eligible Population*: 17,288



*Percent of people that are either partially/fully vaccinated through state & federal entities out of the estimated 5+ population

Vaccinated Status by Age Inyo County



COVID-19 Vaccine

Clinics Eligibility & Clinics



Rural Health Clinic * —

Wednesdays from Noon to 1:00 pm

*Appointments required



Pediatric Clinic * —

Wednesdays from 2:45 to 4:30 pm

*Appointments required

(limited vaccine available):



Public Health Clinic * —

Tuesdays from 1:00 to 4:00 pm

*Appointments highly recommended; walk-ins may be limited

Approved COVID-19 Providers:



You can book an appointment or find vaccine clinics by visiting:

www.inyocounty.us/vaccines



BOOSTER:

5 - 11



N/A

12+



✓ 16+

18+



✓ 18+

18+



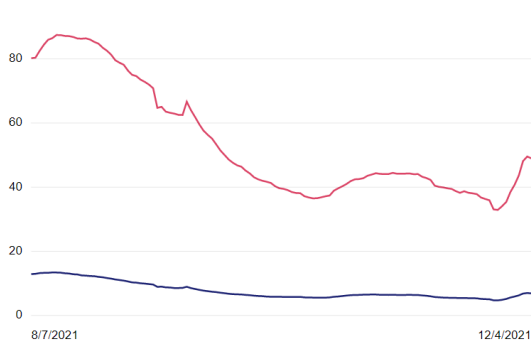
✓ 18+

COVID-19 Vaccine Effectiveness – California

Scan the QR Code with a smart phone, or visit:
covid19.ca.gov/state-dashboard/#postvax-status

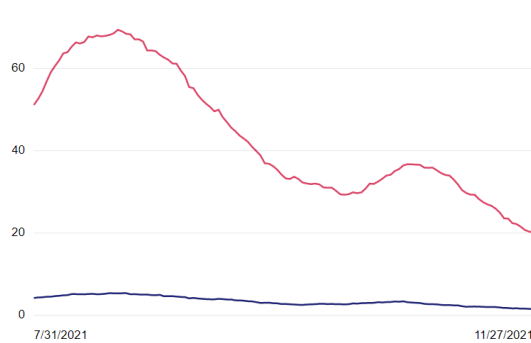


Cases per 100K (7-day running average)



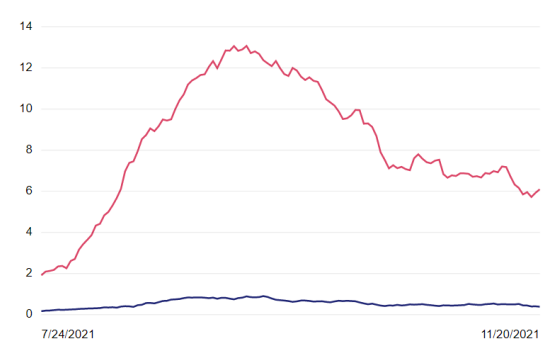
From November 28, 2021 to December 4, 2021, unvaccinated people were **7.1x more likely** to get COVID-19 than fully vaccinated people.

Hospitalizations per million (7-day running average)



From November 21, 2021 to November 27, 2021, unvaccinated people were **12.8x more likely** to be hospitalized with COVID-19 than fully vaccinated people.

Deaths per million (7-day running average)



From November 14, 2021 to November 20, 2021, unvaccinated people were **15.8x more likely** to die from COVID-19 than fully vaccinated people.

Inyo County

Post-Vaccination Cases

Scan the QR Code with a
smart phone, or visit:
www.inyocounty.us/covid-19/data-resources



July 2021: 12 cases | 29% of total July cases

August 2021: 22 cases | 19.6% of total August cases

September 2021: 23 cases | 11% of total September cases

October 2021: 30 cases | 5.5% of total October cases

November 2021: 58 cases | 25.1 % of total November cases

- Many incidents of breakthrough infections in November were in individuals who had been vaccinated >6 months ago, illustrating the importance of boosters.

Post-Vaccination Cases at the local level are compiled and updated after the end of each month.

COVID-19 RESPONSE



Questions? Email:

HealthOfficer@inyocounty.us

or

VaccineInfo@inyocounty.us